



BENTON
COMMUNITY
FOUNDATION

2020
ANNUAL
Report





2020 Board of Directors

Ilene Kleinsorge
Chair

Susan Poole
Vice Chair

Cameron Howell
Treasurer

Dave Gazeley
Secretary

Xan Augerot

Tammy Bray

Melissa Goff

Pat Lampton

Cam Little

Julie Manning

Joan Reukauf

John Turman

Justin Wirth

Mission

To enhance our communities through philanthropy.

Vision

We envision a future where:

We further the aspirations of children, youth and families.

We invest in resilient and healthy communities.

We protect cherished resources for future generations.

Values

We value integrity, respect, innovation, excellent stewardship, collaboration, and equity in our grantmaking.

Most of all, we honor the trust placed in us by respecting our donors' wishes.

Equity, Diversity & Inclusion

The Benton Community Foundation is committed to developing and maintaining a culture of diversity and equity in its service to Benton County communities. We believe effective development and stewardship of charitable funds depends on trust and understanding among diverse people, and that effective grant support for children and families depends on strategies that are inclusive and intentional, designed to overcome historic inequities and create positive, systemic change. We are committed to improving the well-being and economic resilience of marginalized and underserved people within our communities and to furthering the aspirations of children, youth, and families, so all our neighbors can achieve a brighter future.



Message from the Board

Benton Community Foundation is recognized as a catalyst, convener and collaborator in identifying and resolving emerging issues in Benton County and our region. "Enhancing our communities through philanthropy" is an ongoing BCF theme. 2020 was an evolving year of uncertainty due to the COVID pandemic, wildfires and insecurity for many Benton County citizens. These conditions made this motto more relevant.

With increased donor response, while working with local and regional collaborators, BCF was able to distribute critical funding. These resources provided direct benefit to Benton County citizens. In spite of challenging situations, BCF had a most successful year. Because of what you, our donors, have given, BCF has provided more grants and scholarships to area nonprofits and individuals than in our history.

We do live in a generous community. With support of donors and community members, we are transforming the lives of those in need in the Benton County region. The BCF Board of Directors recognizes and appreciates your significant commitment. From the small investment made more than 68 years ago, BCF has grown its assets to more than \$27 million, and with your help will continue to expand.

As Board Chair, along with a truly committed Board and with dedicated staff, I am grateful for you and the BCF success of 2020. Community Foundations are uniquely positioned to achieve your goals. The Benton Community Foundation is your Foundation.

Susan H. Poole
Chair of the Board of Directors, 2021



Excellence. Accountability. Impact.™

Responding to COVID-19

BCF's COVID-19 Response Fund

In March 2020, BCF established the COVID-19 Response Fund to help nonprofits support their communities during the coronavirus crisis. More than ninety donors contributed, and in April BCF disbursed its first round of emergency grants focused on providing food and childcare.

“We never closed our doors, but a lot of our operations had to change,” said Janeece Cook, Program Coordinator at Monroe’s

South Benton Food Pantry, a recipient of the fund. “Our pantry is normally a shopping-style pantry so people can shop for the things they need, but when the pandemic hit, we had to go back to making food boxes for the families.”

Nonprofits have faced unique challenges during the pandemic. Many are working to meet increased needs while reconfiguring their operations to accommodate safety



In response to the pandemic, the South Benton Food Bank began delivering meals to seniors in rural Benton County.

guidelines. BCF’s COVID-19 Response Fund was designed to help mitigate some of those challenges. By mid-June, more than \$240,000 in emergency grants was disbursed, and by December, the number rose to \$443,000, supporting 31 organizations. Many had to get creative to reach those in need.

“I noticed as time went on I wasn’t seeing any of the senior population at the Thursday afternoon pantries,” said Cook. “It was difficult to not hear from the families I normally did.” Cook decided to collaborate with Lory Bechtold of South Benton Community

Enhancement on a plan to deliver meals to seniors in rural Benton County.

“I know the seniors are feeling really isolated,” said Bechtold. “They’re not having that interaction with their family, but they also don’t get to go twice a week to get a warm meal. I thought if I could write a grant, and we could get them a meal that’s easy to prepare, that would show they’re being cared for and their community is concerned about them.”

To learn more about how BCF is helping nonprofits respond to COVID-19, contact our team at 541-753-1603.

Responding to COVID-19 *(continued)*

2020 Timeline

March 8

Governor Brown declares state of emergency in response to coronavirus spread

March 19

COVID-19 Response Fund approved by the BCF Board of Directors

April 13

BCF disburses first round of emergency grants totaling \$81,500

May 22

BCF disburses second round of emergency grants totaling \$100,000

June 15

BCF disburses emergency grants totaling \$61,500

July 13

BCF disburses emergency grants totaling \$66,000

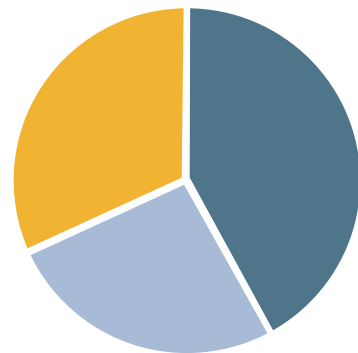
December 18

BCF disburses emergency grants totaling \$134,500

BCF COVID-19 Response Fund

Contributions

- **Community donations \$166,345**
- **BCF Fund Transfers \$83,155**
- **Benton County government funding \$200,000**



Grants by Program Type

- **Food 38%**
- **Youth Programs 17%**
- **Housing & Shelter 16%**
- **Individual Support 11%**
- **Childcare 7%**
- **Relief Operations 11%**



Dial-A-Bus

During the pandemic, Dial-A-Bus of Benton County began a food delivery program for vulnerable seniors and those under quarantine. BCF's COVID-19 Response Fund supported the program with grants in May, June, and December.



Stone Soup of Corvallis partnering with Valley Catering

In 2020, Stone Soup of Corvallis began partnering with Valley Catering to provide to-go meals for local families affected by the pandemic. Grants from the BCF COVID-19 Response Fund supported new expenses associated with the program, including handwashing stations and meal preparation costs.



Philomath Community Services

Philomath Community Services' programs include a food bank, gleaners, clothing closet, and community garden. Grants from BCF supported increased services during the pandemic.



2020 Grants

About

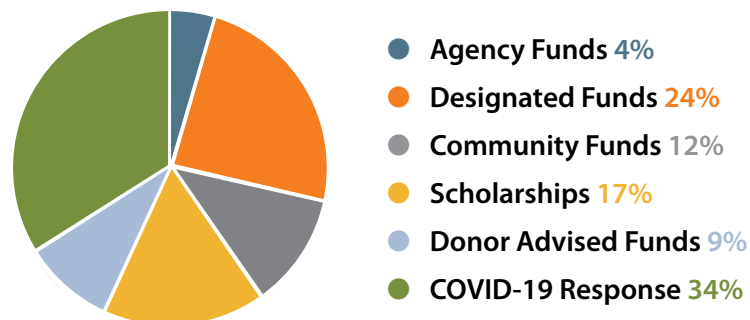
In 2020, the Benton Community Foundation disbursed more than \$1.3 million, reaching 111 nonprofits and universities, including grant recipients in Albany, Alsea, Blodgett, Corvallis, Monroe, and Philomath.

Fund Types

BCF grants are made from a variety of funding vehicles, including both endowed and non-endowed funds, each with unique benefits to the community.

- **Agency Funds** are established by nonprofit agencies to create a sustainable funding resource for their future. Each year, BCF makes a grant from the endowment back to the nonprofit.
- **Community Funds** are endowed to provide grants during BCF's annual competitive grants process. Local nonprofit and charitable organizations apply for grants, and recipients are determined by the BCF Board of Directors.
- **Designated Funds** are endowments established by community members to support one or more specific charitable organizations. The endowment provides an annual grant each year in perpetuity.
- **Donor Advised Funds** give donors more flexibility in reaching their philanthropic goals. Donors recommend grants, and the Foundation handles the rest. BCF even compiles summaries of its community grant requests to pass along to our fundholders, so donors know what current projects need funding.

2020 Grants by Fund Type



Partnering With Nonprofits to Create Resources for Perpetuity

"A museum is a collecting organization, and the objects you collect are held in the public trust," said Irene Zenev, Executive Director of the Benton County Historical Society. "Once you take on that obligation you have to preserve those collections in perpetuity. We're obligated to always be around, so we have to find ways to make sure the public has access to the objects we've collected."

The Benton Community Foundation, too, manages assets in perpetuity, so in 2005 the Historical Society opened an endowment at BCF to create a reliable and long-term source of funding for BCHS's operations.

When construction on BCHS's Corvallis Museum was completed in 2020, BCHS renewed its effort to grow sustainable

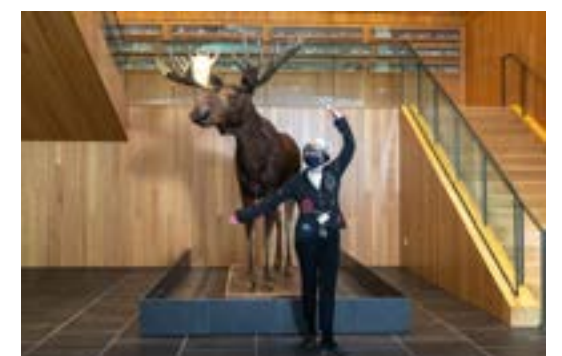
funding for the future. With a goal of \$10 million in endowed funds, BCHS is looking ahead to provide operations support so the organization can continue to present exhibitions and programs for community members for decades to come.

"My theory is, you have to have the highest quality project and programming you can strive for," said Zenev. "People respond to quality. When we presented people with the new museum design and people saw how innovative and remarkable it was, they wanted to be part of it. You have to do the very best job you can."

Contributions to the Historical Society's endowment can be made directly at www.BCFgives.org.



The Corvallis Museum showcases historical objects from Corvallis and across Benton County.



Executive Director Irene Zenev poses with Bruce the Moose, who served as the mascot for the museum's capital campaign.

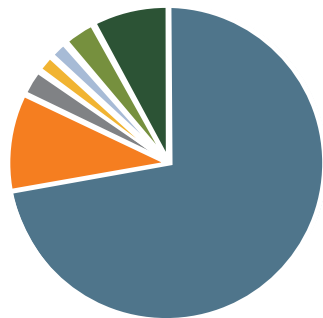
2020 Scholarships

In 2020, the Benton Community Foundation awarded scholarships from 66 named funds. Awards totaled more than \$220,000 and supported 83 students from Corvallis High School, Crescent Valley High School, Monroe High School, Philomath High School, and Santiam Christian, as well as currently enrolled students at Oregon State University.

Scholarship funds at BCF can support students focusing on a specific field or trade, attending a certain university, or graduating from a particular high school. Scholarship funds can also be designed to create renewable awards, providing additional support to the student throughout their education. Interested in setting up a scholarship? Contact the Foundation at 541-753-1603.

Scholarships for Oregon students

In 2020, more than 90% of BCF scholarship recipients chose to continue their studies in Oregon.



- Oregon State University
- Linn Benton Community College
- Portland Community College
- Western Oregon University
- University of Oregon
- Other in Oregon
- Out of state



Raven Waldron, BCF scholarship recipient and graduate student at Oregon State University's College of Pharmacy

Making an Impact in Healthcare

"My grandma told me, 'Education is the ladder,'" said Raven Waldron, a graduate student at Oregon State University's College of Pharmacy. "That stuck with me, that she always wanted me to go to college."

In the spring of 2018, Raven earned her bachelor's in BioResource Research, with a focus on toxicology, and that fall began OSU's doctoral program in pharmacy. "I was doing environmental research, on environmental toxins, and I was missing that human connection," said Raven. "I was starting to look into other options where I could use that chemistry knowledge but have more interactions with people."

To support her studies, BCF awarded Raven the Helen J. and Harold Gilman Smith Scholarship, an endowed scholarship that supports five Native American students at OSU each year. Students may reapply annually, allowing them the chance to receive financial support throughout their education.

"Something that's been nice about the scholarships and not having to work all the time to pay tuition is I've been able to take on additional training opportunities that many students can't afford to add to their plate," said Raven, who also stays involved

in numerous student organizations. "I took a ten-week course in facilitating dialogue about bias, and that's been instrumental in helping me feel like I can be the one who teaches healthcare providers the skills they need to start interrupting these biases, to start intervening in situations where we can better serve our patients, and better serve each other as colleagues."

Raven's professional goals include addressing the discord between Western medicine and traditional indigenous knowledge, building trust between healthcare providers and Native communities, and bridging the gap between sciences and the humanities.

"Too often, we see science and STEM as the opposite of social sciences, ethnic studies, and activism," said Raven. "But these seemingly opposing forces are intricately intertwined, and integrating them with one another is crucial to making our world a better place."

Raven will bring her knowledge and experience to rural and underserved communities after her graduation in 2022.

To learn more about establishing an endowed scholarship at the Benton Community Foundation, contact our team at 541-753-1603.

2020 Philanthropic Achievement Awards

Honoring those who give back

About the Philanthropic Achievement Awards

BCF launched the Philanthropic Achievement Awards in 2019 to honor outstanding accomplishments in philanthropy in the mid-Willamette Valley. The event showcases the hard work of our talented and generous communities, and celebrates the people who volunteer, donate, and inspire others to create a bright future for children and families. The event coincides with National Philanthropy Day, recognized annually on November 15th.

In 2020, the event transitioned to a virtual format, and hundreds of community members logged on to share the experience. Thank you to everyone who made this event successful—those who submitted nominations, sponsored the program, volunteered in their communities, gave back to their neighbors, and found creative ways to engage in philanthropy.



Nominated by the OSU Foundation, John and Shirley Byrne received the 2020 Board of Directors' Award for Outstanding Philanthropic Achievement.

2020 Recipients

Outstanding Volunteer Fundraiser

Alice Rampton

Outstanding Emerging Philanthropist

Kappa Alpha Theta

Outstanding Fundraising Professional

Jessica McDonald (Greenbelt Land Trust)

Outstanding Innovative Project or Program

The Power of 100 People Who Care

Outstanding Volunteer Group

The Assistance League of Corvallis

Outstanding Philanthropic Business

Starker Forests, Inc.

Board of Directors' Award for Outstanding Philanthropic Achievement

John & Shirley Byrne

Thank You to Our Sponsors

Mission Sponsors

10D Tech

Horsepower Productions

OSU Foundation

Samaritan Health Services

Schupp/Plemmons/Cook Wealth Management
Group of Wells Fargo Advisors

Trillium Family Services

Community Sponsors

Cam W. Little, DDS

Citizens Bank

Corvallis Radiology

Jodi B Herring Photography

Equity, Diversity, and Inclusion Consulting

Ilene Kleinsorge

Representing Philanthropy Through Art

In 2019, BCF began partnering with The Arts Center to solicit designs for the physical awards presented to recipients of the Philanthropic Achievement Awards. The 2019 design was produced by Rhoda Fleischman of Brownsville, while the 2020 design (pictured) was produced by Jeff Gunn of Philomath.

"My choice of lidded vessels for award pieces was based on wanting them to be both functional and decorative. Lidded vessels have a hidden, covered space to fill

and a surface to decorate," writes Jeff. "The brushwork of leaves and red berries comes from my enjoyment of gardening and exploring the natural world."



Finances & Investments

Our Investment Policy

BCF's investment policy is built on the precepts of diversification, a long-term strategic focus, and prudent risk management. The Finance Committee—comprised of local, experienced investment professionals—assists the Board of Directors in establishing the guidelines, setting the asset allocation, and monitoring the results. We strive to balance the needs of today with growth for tomorrow.

Diversified Asset Allocation

A prudently diversified portfolio and a structured, disciplined process are keys to generating the greatest return while minimizing the risk of loss during ever-changing market conditions. Our portfolio is well-diversified between asset class and size, geographic location, and among complementary management styles.

Excellent Investment Management

BCF's assets are entrusted to best-in-class asset managers selected for their expertise in specific areas of the market.

Net Time-Weighted Trailing Returns

Returns Greater Than 1 Year Annualized
As of 12/31/2020

1 Year	11.7%
3 Years	7.3%
5 Years	8.7%
7 Years	6.5%
10 Years	7.1%

Message from Our Investment Advisors

The Schupp/Plemmons/Cook Wealth Management Group of Wells Fargo Advisors had the privilege of helping Benton Community Foundation (BCF) navigate the choppy waters of 2020, a year that will go down in the history books and be studied for decades. The stock market began to correct while we were assisting BCF in revising and updating its investment policy statement. Seeing that conditions were going to deteriorate, we decided it prudent to focus on our primary fiduciary duty to our client of principal protection. We paused the reallocation process and committed significant assets to the "safe haven" investments of U.S. Treasury bonds.

The individual securities mentioned in this report are provided for informational purposes only as they are part of our overall PIM portfolio strategy. They are not intended to represent individual buy or sell recommendations. Holdings are subject to change. As clients may restrict the holding in their individual PIM accounts portfolio, changes may not necessarily apply to all accounts.

The PIM program is not designed for excessively traded or inactive accounts, and may not be suitable for all investors. Please carefully review the Wells Fargo Advisors advisory disclosure documents for a full description of our services. The minimum account size for this program is \$50,000.

Wells Fargo Advisors is a trade name used by Wells Fargo Clearing Services, LLC, Member of SIPC, a registered broker-dealer and non-bank affiliate of Wells Fargo & Company.

After the new investment policy was completed, our group resumed portfolio realignment, gradually increasing exposure to riskier assets. With several trillion dollars of monetary and fiscal stimulus pumped into the financial system, the investing landscape became less murky. Working closely with BCF's Finance Committee, we believe we were able to make it through this tumultuous year relatively unscathed. It is an honor to partner with Benton Community Foundation and be on the team that supports its important mission. Thank you for the opportunity to be of service.

Glenn Plemmons

Senior Vice President – Investments
Senior PIM Portfolio Manager
Schupp/Plemmons/Cook
Wealth Management Group Of
Wells Fargo Advisors

Investment and Insurance Products are:

- Not Insured by the FDIC or Any Federal Government Agency
- Not a Deposit or Other Obligation of, or Guaranteed by, the Bank or Any Bank Affiliate
- Subject to Investment Risks, Including Possible Loss of the Principal Amount Invested

Consolidated Statement of Financial Position

Assets	As of 12/31/20 Unaudited	As of 12/31/19 Audited
Cash	963,301	198,617
Contributions Receivable	1,018	37,443
Investments	26,897,065	24,440,120
Other Assets	4,375	4,375
Total Assets	27,865,759	24,680,555

Liabilities & Net Assets

Liabilities

Accounts payable & accrued expenses	21,118	23,995
Funds held as agency endowments	733,786	699,585
Total Liabilities	754,904	723,580

Net Assets

Without Donor Restrictions	1,223,315	794,696
With Donor Restrictions	25,887,540	23,162,279
Total Net Assets	27,110,855	23,956,975

Total Liabilities & Net Assets	27,865,759	24,680,555
---	-------------------	-------------------

Consolidated Statement of Activities

Revenues & Gains	As of 12/31/20 Unaudited	As of 12/31/19 Audited
Grants and donations	1,818,787	1,377,816
Non-cash contributions	285,121	563,610
Refund of Grant	45,050	734,889
Income (loss) on investments	2,747,508	3,518,595
Total Revenue and Gains	4,896,466	6,194,910

Expenses

Scholarships, grants, and other program expenses	1,266,104	828,925
General and administrative	357,794	333,566
Fundraising	79,169	79,983
Total Expenses	1,703,067	1,242,474



In 2020, BCF awarded grants to Philomath Community Services, which provides a food bank, gleaning program, clothing closet, and community garden.

Creating a Legacy

The C & J Whiteman Endowed Scholarship Fund

In 2015, Jenny Whiteman contacted the Benton Community Foundation to discuss the idea of creating an endowed scholarship that would be supported by her estate. Jenny met with the BCF team to discuss her interests: supporting students studying the trades. BCF worked with Jenny to create a scholarship that would support future carpenters, welders, mechanics, electricians, and other tradespeople.

“The world is moving toward technology but there are some kids who don’t fit that,” said Dan Whiteman, Jenny’s son. “She wanted to provide an opportunity for kids who were hands on and clicked better with trade work.”

After Jenny passed in 2020, contributions from her estate established the C & J

Whiteman Endowed Scholarship Fund, in honor of Jenny and her late husband Charlie. The fund will soon provide \$5,000 in annual awards to students from Philomath High School pursuing the trades.

“Jenny was always learning,” said Dan. “She had a green thumb and was always working with plants and talking with people about plants and that’s what drove her.”

Jenny’s passion for learning will carry on in perpetuity and benefit Philomath students for decades to come. If you’d like to learn more about using the Benton Community Foundation to create a legacy, contact our team at 541-753-1603.



Legacy gifts to BCF can be endowed to support critical needs for many years to come.



Message From the President/CEO

Dear friends,

Thank you for your generous support in 2020, which helped the Benton Community Foundation respond to a challenging year for local communities and our nonprofit partners.

Together, we delivered more than \$440,000 in relief through BCF’s COVID-19 Response Fund, an effort supported by local donors and Benton County government. Combined with the \$875,000 delivered through BCF’s annual grant process, last year’s disbursement of \$1.3 million dollars was part of the most impactful grant season in BCF’s 68-year history.

Just as important was the hope you shared with us as the pandemic unfolded. Because of you, community leaders pulled together to take action and help the people and organizations most affected by the pandemic. While our community faced challenges, organizations that provide food, shelter, education, medical care, childcare, and an endless list of services pivoted their businesses quickly while working tirelessly to meet our neighbors’ needs. We are thankful for the spirit of selfless collaboration held amongst our nonprofit partners, whose staff and volunteers enrich our community and have put us on a path for a brighter future.

We’re working toward that future today and need your help to ensure its vitality. There is still work to be done, and the Benton Community Foundation will continue our efforts to improve the futures of all families that live, work, and travel to Benton County. We are thankful for your generosity and commitment to helping us build that future together.

With sincere thanks,

A handwritten signature in blue ink that reads "Chris Quaka".

Chris Quaka
President /CEO

Funds at BCF

**Opened in 2020*

Agency Endowments

Benton County Historical Society Endowment Fund
Benton Habitat for Humanity Endowment Fund
Central Linn Community Foundation Fund
Cornerstone Associates Endowment Fund
Corvallis Community Band Endowment Fund
Corvallis Environmental Center Endowment
Corvallis Professional Firefighters Charitable Fund
Heart of the Valley Children's Choir Fund
Heartland Humane Society Fund
We Care Endowment Fund
Whiteside Theatre Foundation Endowment Fund for the Christmas Movie
Whiteside Theatre General Purpose Endowment Fund

Community Funds

Albert Caffodio/Schreck Family Fund
Alice Mills Morrow Community Grant Endowment
Allen & Jean Peters Family Community Grant Fund
Bernard M. Guthrie Endowment Fund
Bruce Starker Memorial Fund
Claude Buchanan Fund
Claude E. & Eleanor C. Ingalls Fund
Corvallis Rotary Club Fund #1
Dorothy F. and Walter S. Hopkins, Jr. Fund
Edward C. Allworth Memorial Fund
Elizabeth Starker Cameron Endowed Fund
Emma Ree Burst Fund
Ervin C. & Helen C. Reiman Memorial Fund
Farl Cathey Tubb Fund
Glenn & Sheila Plemmons Family Fund

Greater Corvallis Rotary Club Fund
Harold & Arlys Benson Endowment Fund
Harry & Lorraine Lagestee Community Endowment
Hispanic Children's Fund of Benton & Linn Counties
Homeless to Housing Community Initiative Fund
John and Linda Martinsen Family Fund
Marvin & Shirley McDonald Endowment
May C. Korschgen Fund
Peffer-Y Trust Fund
Roger B. & Geraldine Williams Memorial Fund
Sam L. & Margaret Millsap Endowment Fund
Stanley & William Wilt Fund
Stephenson Family General Fund
T.J. & Margaret O. Starker Memorial Fund
Tom & Donna Allen Family Fund
W.M. "Billy" & Dorothy Ball, the Philip Ball & the Waldo & Mabel Ball Memorial Fund
William E. & Doris Conger Caldwell Memorial Fund

Designated Funds

Air Force ROTC Silver Talons Endowed Support Fund
Alice Mills Morrow Corvallis Housing First Endowment
Alice Mills Morrow Stone Soup Endowment
Alice Mills Morrow Vina Moses Welfare Center, Inc. Endowment
Aqua-Thusiasts Fund - Boy Scouts
Aqua-Thusiasts Fund - Girl Scouts
Benton County Diabetes Health Promotion Endowment Fund
Beth Strong Fund
Cliff Heselton Fund
Cosima D Vitus Rankin Fund
David & Nita Smith Endowment Fund

Funds at BCF *(continued)*

Don Nelson Absolutely Flyin' Fund
Dr. Ken Johnson Dental Clinic Fund
E.E. Wilson Fund
Fred & Mary Brauti Endowment Fund
Friends of Corvallis High School Band Endowment Fund
Gene & Helen Hansen Fund
Genny Stephenson Hospice Fund
Gertrude Lunde Cropsy Memorial Fund
Goldie Rogers Composition Award Fund
Harris E. & Jean F. Rosendahl Fund
Harry & Lorraine Lagestee Designated Endowment
Heselton Boys & Girls Club of Corvallis Endowment
James Eickelberg Fund
Karly Sheehan Memorial Fund
Kermit & Jean Starker Roth Aquatic Fund
Kermit & Jean Starker Roth Park Fund
Leslie & Margaret Wheeler Family Fund
Lloyd & JoAnne Anderson Memorial Fund
Majestic Performing Arts Fund
* Michael and Maxine Rainbolt Military Endowment
Oregon Cascades West Senior Services Foundation Fund
OSU Veterinary Medicine Scholarship Fund
Peffer Boys & Girls Club of Corvallis
Peffer-Boys Scouts Fund
Peffer-Girl Scouts Fund
Philomath School District Pool Endowment Fund
Ray & Genny Stephenson Vina Moses Fund
Robert C. & Patricia Wilson Fund
Ron & Ann Marek Endowment
Ronald E. & Terrill Johnston Welty Family Memorial Fund
Rotary Club of Corvallis Morning Jackson Street Youth Services Fund

Stephenson Family Meals On Wheels Fund
Stephenson Family Old Mill Center Fund
Thompson Snyder Memorial Fund
Walter J. & Marcia S. Reeder Family Fund
William P. & Dorothy M. Eddy Memorial Fund
William Taubeneck Fund

Donor Advised Funds

Alice Mills Morrow Fund
Dale Ramsay Donor Advised Fund
Emilie Jo Pastega Simpson Fund
Fred & Mary Brauti Donor Advised Fund
Hill Family Donor Advised Fund
Ron and Soozie Stevens Donor Advised Fund
Rotary Club After 5 Fund
Rotary Club of Corvallis Donor Advised Fund
ROTC & Veterans Support Fund
STMF Fund
Susan and David Cook Donor Advised Fund
Traber Family Fund
* Uerlings Family Fund
Verlyne and Wayne Phillips Fund

Scholarship Funds

Allen & Jean Peters Scholarship Fund
Benton County Rotary Youth Scholarship Endowment Fund
Bob & Billie Holcomb Family Youth Hall of Fame Award Fund
* C & J Whiteman Endowed Scholarship Fund
Charles F. and Elaine Mellen Sutherland College of Forestry Education Fund
Charles F. and Elaine Mellen Sutherland Home Economics and Education Fund

Funds at BCF *(continued)*

Citizens Bank Scholarship Fund
Coopey Boys' Memorial Fund
Corvallis Woman's Club Fund
Cropsey Emergency Fund
Dale & Thomasina Trout Scholarship Fund
David Bruce Belcher Fund
David M. Gazeley Endowed Scholarship Fund
David Schacht Emergency Fund
David Schacht Scholarship
Dorothy May Jenks Endowed Scholarship Fund
Emily & Vic Logan Fund
Glenn G. Shephard Memorial Scholarship
Godfrey Music Fund
H. Wayne & Edna M. Schultz Scholarship Fund
Harry & Lorraine Lagestee Scholarship Endowment
Helen & Hugh Wood Fund
Helen J. & Harold Gilman Smith Fund
* Hendrix Heating & Air Conditioning Scholarship
Herb & Peggy Ballard Memorial Scholarship Fund
Jim Kohl Give Me a Chance Scholarship
Joel R Friend Fund
John & Nancy Dennis Scholarship Fund
John C. & Jeanne L. Mackey Endowed Scholarship
John Callahan Memorial Fund
Kilbuck Family Native American Fund
Knights of Pythias Scholarship Fund
Lillian & Paul Petri Foreign Music Study Fund
Loene Pooler Guthrie Scholarship Fund
Loren J. & Audrey W. Smith Scholarship Fund
Louie Locke Athletic Scholarship Fund
Lucy Hsu Ho Fund
Margaret Dowell-Gravatt Fund
Marjorie Rowett Sutherland Scholarship Fund
Masonic Lodge Scholarship

* Maureen Scanlon Haynes Scholarship
Maybelle Game Carlson Fund
Otto J. & Adelia M. Hahn Scholarship Fund
Patricia McEwan Wilson Memorial Fund
Peter & Barbara Hutton Scholarship Fund
Robin V. Jensen Memorial Scholarship Fund
Ruth & Julian Adams Memorial Scholarship
Scott Minter Memorial Cross-Country Scholarship
* The Tailwinds Fund
Tom & Pat Gallagher Endowed Scholarship Fund
Vincent B. Roberts Family Fund
William Harrison Gill Education Fund

ROTC Scholarship Funds

94th Bomb Group Scholarship Fund
American Legion, Post #11 ROTC Scholarship Fund
Col. Arnold E. "Gene" Bench & Lieutenant Frederick E. Pokorney, Jr. Memorial Scholarship Fund
LTC David & Dorothy Blasen Memorial Scholarship
Bond, Foster, Rainey Families Endowed ROTC Scholarship
Capt Robert A. Brett, Maj Gregory L. Stone, Maj James R. Trower Memorial Scholarship
Col Donald E. Carter, Lon & Mary Jensen, Helen Kirby ROTC Scholarship
Justin D. Cole & Donald R. Meeks, Jr. ROTC Scholarship
Mark & Jennifer Fitch Family Scholarship
Col Ejner J. Fulsang, Cpt Gerry A. Harr, LTC John H. Landers, Jr., Cecil & Martha MacGregor, LTC Stephen C. Marks Memorial Scholarship
Col. Frank N. & Dorothy E. Halm Memorial Scholarship Fund
Dixie & Jimmy Holder Memorial Scholarship
Emerald Empire MOAA Endowed Scholarship

Funds at BCF *(continued)*

Eugene M. "Mitch" Beard, Benjamin Gerling, BG Frank & Bobbie Gillespie, LtCol Ivan B. Grimes Memorial Scholarship
Holmes Family, Mater Family, Timothy Vevoda Family ROTC Scholarship
Honor Veterans & Patriots ROTC Scholarship Fund
James L. Kennedy, CMS & Mrs. James Schwab, Sibayan Family ROTC Scholarship
Jay & Kelleigh Killen Military Excellence Endowed Scholarship
Lulay ROTC Endowed Scholarship
Col. Julian & Rebecca McFadden Memorial Scholarship Fund
Military Officers Club of Corvallis; Colonel Mark H. Terrel, LTC; & Thomas P. Bays Scholarship Fund
LtCol Nelson M. Olf Endowed Scholarship Fund
Lt Sidney Fredrickson, Lt Robert Hamill, Lisa Maurer Memorial Scholarship
Jacob Saunders & John-Mark Nelson Endowed Scholarship
Herbert & Harriet Sinnard Fund
Stephens, Branch & Putnam Military Service Memorial Fund
John E. Taylor Family Endowed ROTC Scholarship
Western Oregon University, SGM Charles Beauchamp Memorial Scholarship Fund
Women in ROTC Endowed Scholarship
Walter & Irene McPherson, Anton & Helen Nizich, Michael & Maxine Rainbolt, James & Rose Rainbolt ROTC Scholarship

Special Project Funds

Locke Cemetery Fund

BCF Sustainability Funds

Horace B. & Dorothy Cheney Fund
James S. and Cheryl L. Jordan Sustainability Fund
Peter & Linda Sekermestrovich Family Fund
Thompson Administration Fund
Wilbur M. & Justa Harper Memorial Fund

Legacy Funds

Alice Mills Morrow Legacy Fund
C. Randall and Doreen A. Millar Fund
C. Randall and Doreen A. Millar Fund
Karow Family Fund for LBFS & UUFC
Karow Family Fund for the Grace Center
Kellison Community Needs Endowment
Maj. Gen. Curtis A. and Carol M. Loop Memorial Scholarship Fund

In Memory, 2020

Carla Allen
Susan Cook
Deb Hackleman
Jonathan Hayes
Cliff Heselton
Ken Johnson
John Martinsen
Mary Anne Nardello
Marcia Reeder
Celia Roberts
Robert Steele
Jenny Whiteman



660 NW Harrison Blvd.
Corvallis, OR 97330

*Investing in our community
through philanthropy since 1953*